

# Complete 540 Update

Dennis Jernigan, P.E.

April 15, 2024







# Why Tolling?

1

Build  
Projects Faster

2

More  
Travel Options

3

Improved  
Travel Times

4

Additional  
Funding Source

5

Support  
Growing Populations

# 1990

## NC Population





# 2015

NC Population



51%

Population Growth



# 2050

NC Population



# 40%

Expected Population  
Growth



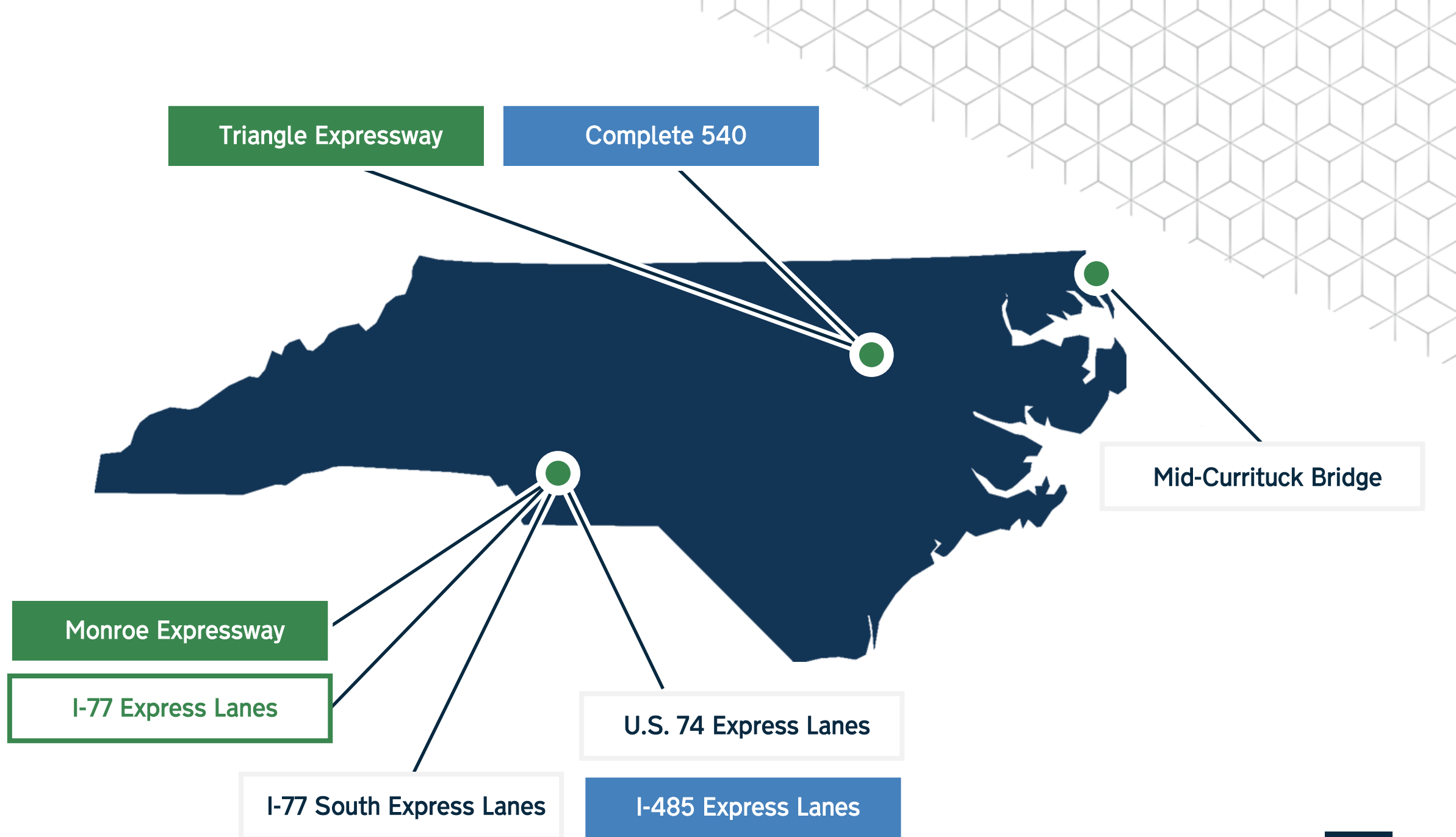


2050  
NC Population



66%  
Population in the  
Triangle or Charlotte







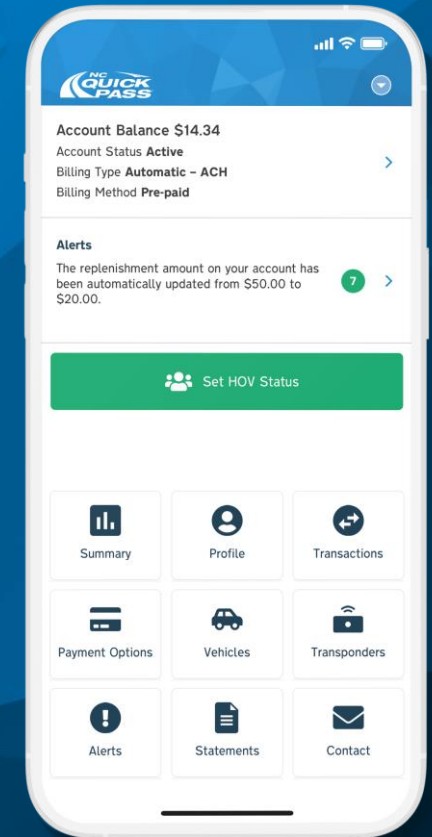
# Service



# Safety



# Innovation



# Right of Way



FACT or FICTION?

NCDOT tries to acquire property by  
providing lowball offers to property  
owners?

**FICTION!!!**

# Right of Way

In general, the Department's policy for acquisition of rights-of-way on primary and interstate projects mirrors the Federal regulations and requirements established for federally funded acquisitions. The acquisition program requirements are outlined as follows:

- Acquire expeditiously by negotiations;
- Afford owner opportunity to accompany appraiser;
- Establish Just Compensation amount (through appraisal, or substitute methodologies of valuation, where appropriate and consistent with state and/or federal law, of property);
- Disregard increase or decrease in value caused by project;
- Provide written statement of and summary of basis for Just Compensation;
- Owner retains property until paid Fair Market Value or amount deposited in court;
- At least Ninety (90) days occupancy permitted after acquisition offer made;
- If continued occupancy as tenant, rent at market rate;
- Coercion prohibited;
- Property may be condemned, owner not forced to sue to prove taking;
- Offer to acquire uneconomic remnants; and
- Fully informed owner may donate right-of-way.





## Record of Decision

Complete 540 - Triangle Expressway Southeast Extension

June 2018





# Right of Way Tool



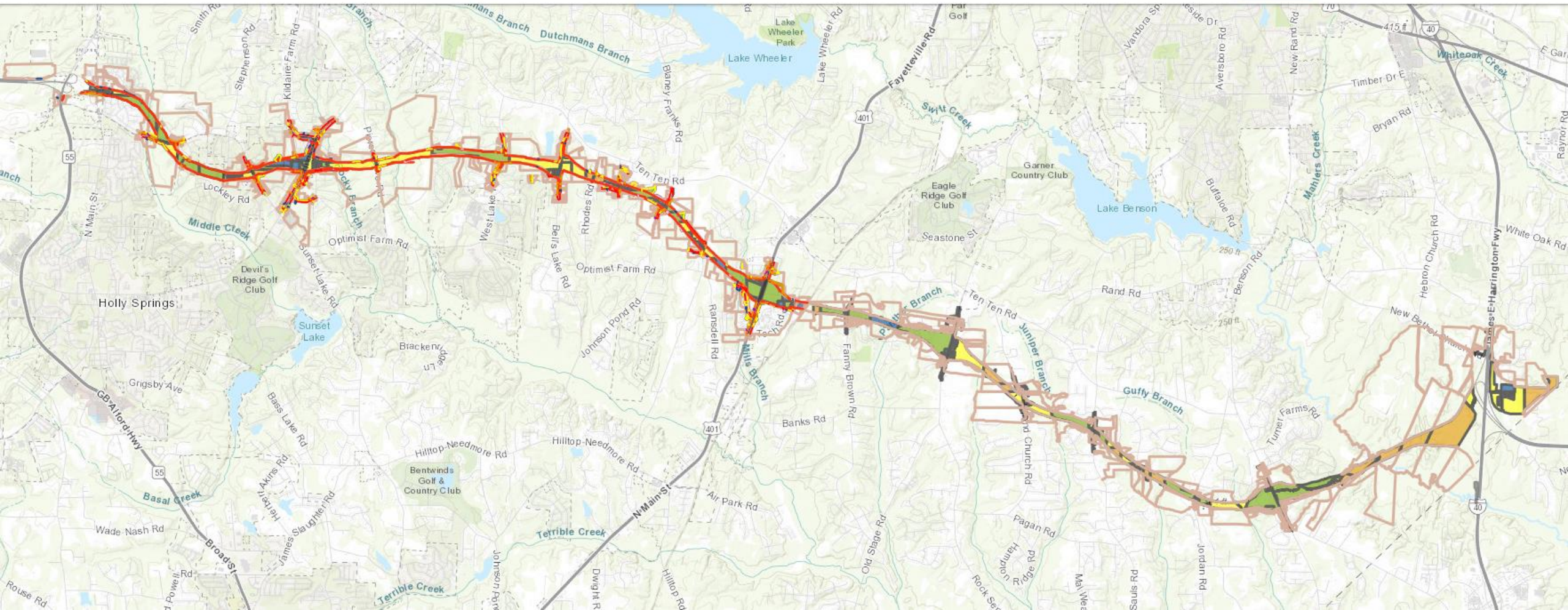
540ROW Real Estate Database

[Home](#)

[Reports](#)

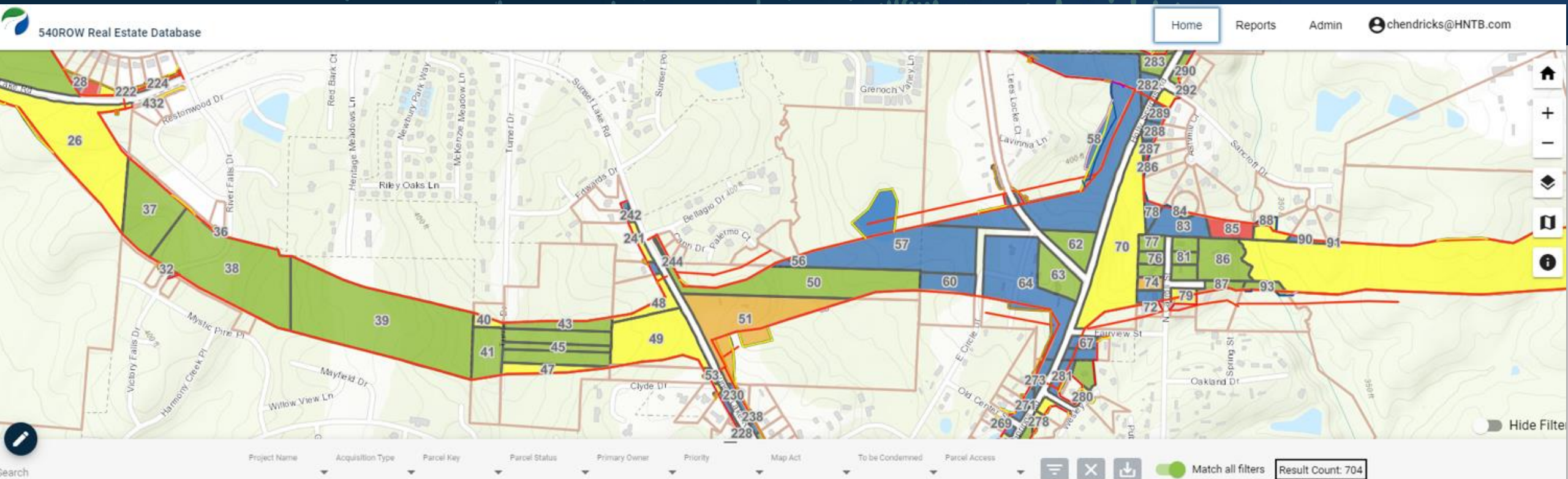
[Admin](#)

[chendricks@H](#)





# Right of Way Tool



Project	Parcel Key	Parcel Status	Priority	Primary Owner	Prop Address	Acq Types	Map Act	To be Condemned	Parcel Access
R2721A	1	<span style="color: blue;">■</span> Settlement	Utility	GEORGE WILLIAMS & JULIA PULLEN HUGHES	0 MOSLEY AVE	Easement, Fee Simple		No	Yes
R2721A	2	<span style="color: green;">■</span> Closed/Condemned	Utility	NC DEPARTMENT OF TRANSPORTATION		Easement, Fee Simple	Map Act	No	Yes
R2721A	3	<span style="color: green;">■</span> Closed/Condemned		NC DEPARTMENT OF TRANSPORTATION		Fee Simple		No	Yes



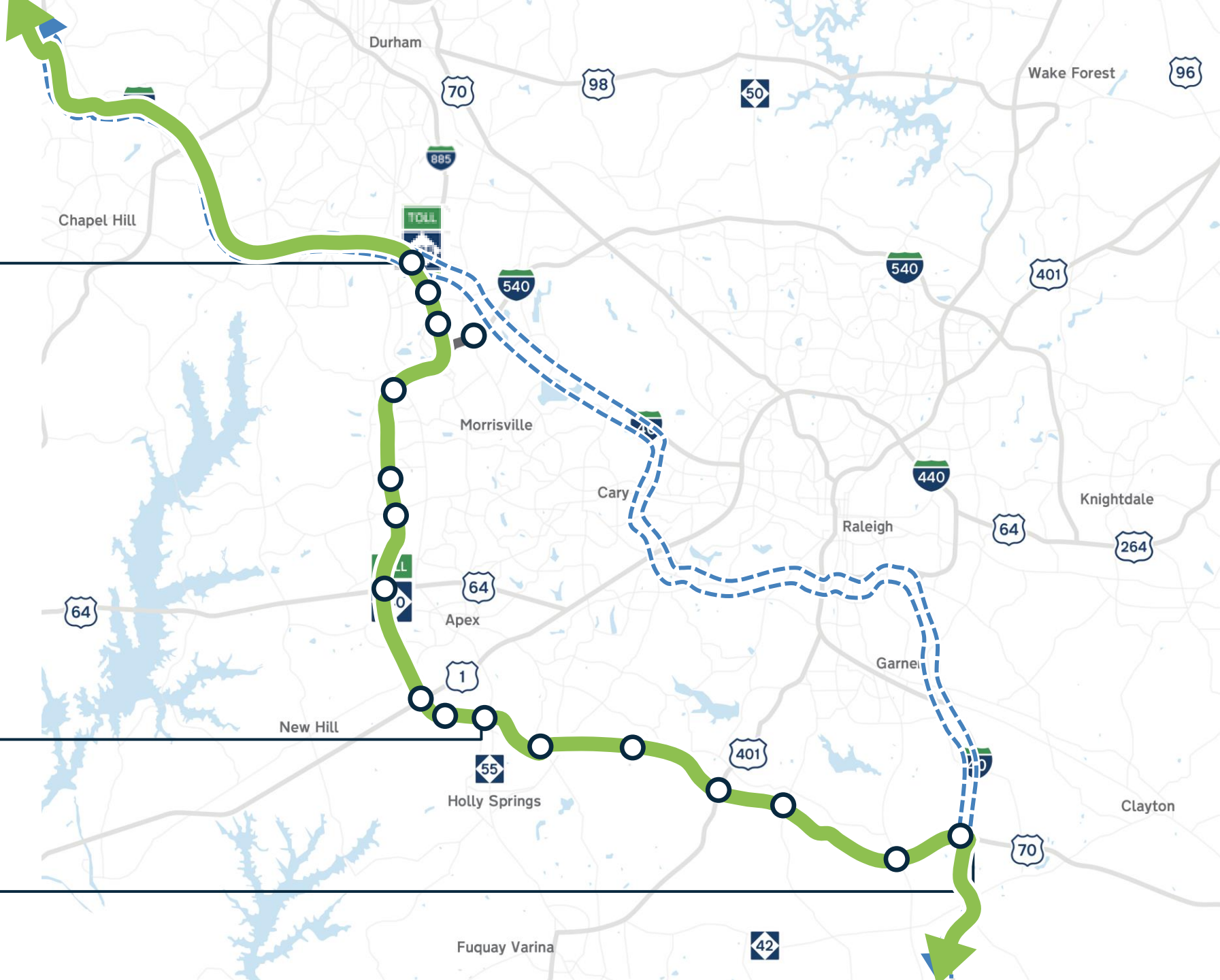
# **Complete 540**

## **Phase 1 Construction**



**Triangle Expressway**  
Open to traffic

**Complete 540 Phase I**  
Under construction



# Complete 540



**Open to traffic (42 miles)**

I-540 & Triangle Expressway



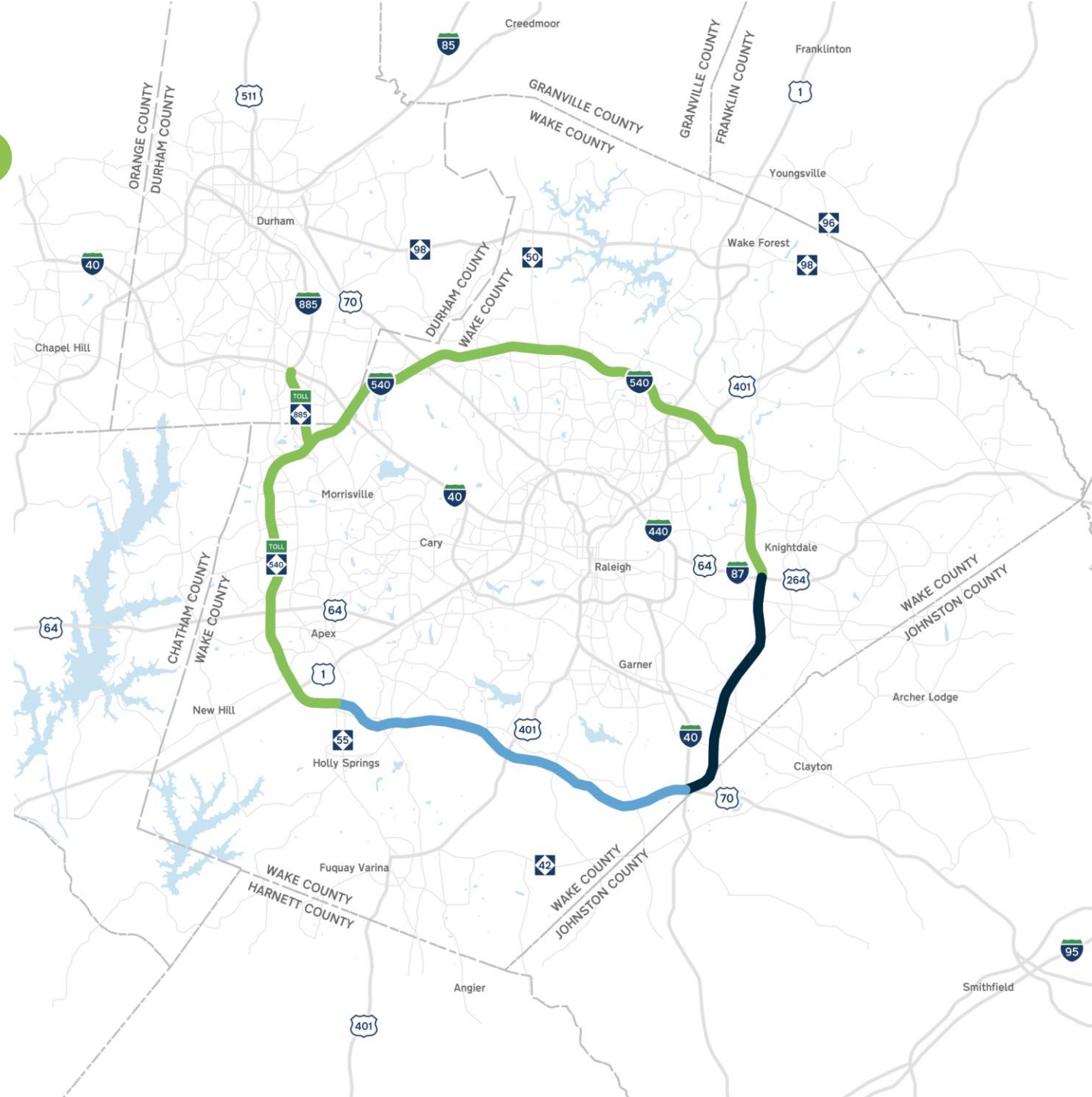
**Under construction (18 miles)**

Southern Wake Expressway  
(Phase 1)



**Under contract (11 miles)**

Eastern Wake Expressway  
(Phase 2)







# R-2721A



## \$183.5M

Cost of Contract

# R-2721B



## \$160.0M

Cost of Contract

# R-2828



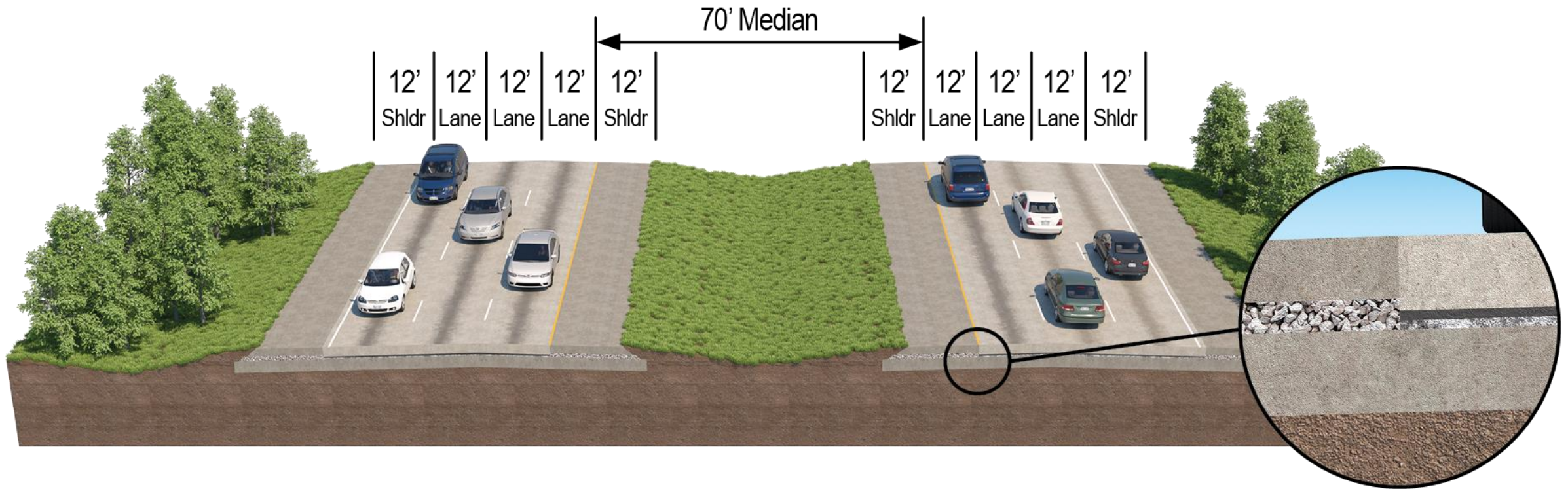
## \$403.2M

Cost of Contract



# Typical Section

N.C. 540 Mainline (R-2828)







**52**  
Bridges



**33**  
Culverts



# N.C. 55 Bypass

A





# East Williams Street

A

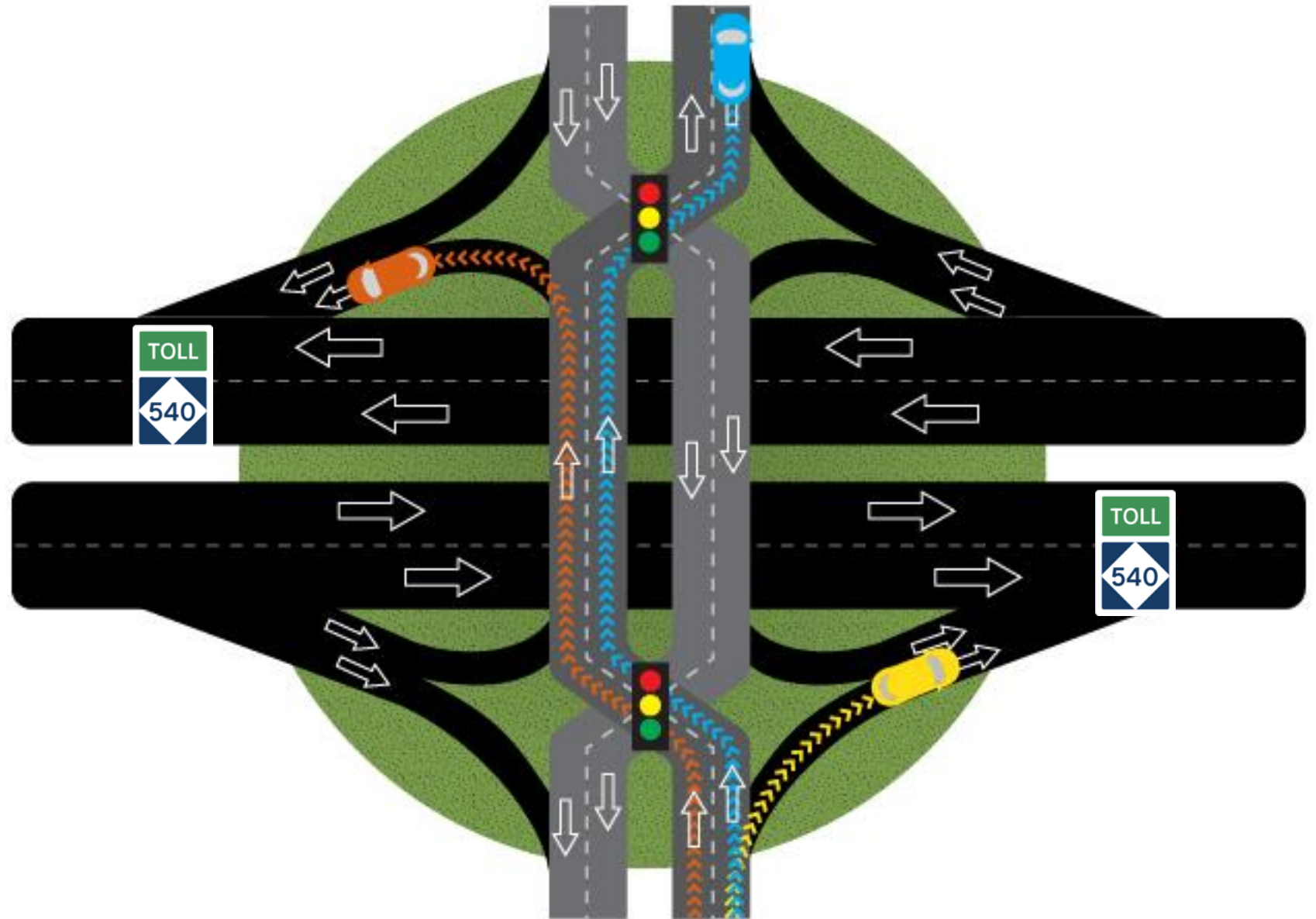




# Design

## Diverging Diamond Interchange

A





# Holly Springs Road

A





Bells Lake  
Road





U.S. 401

B

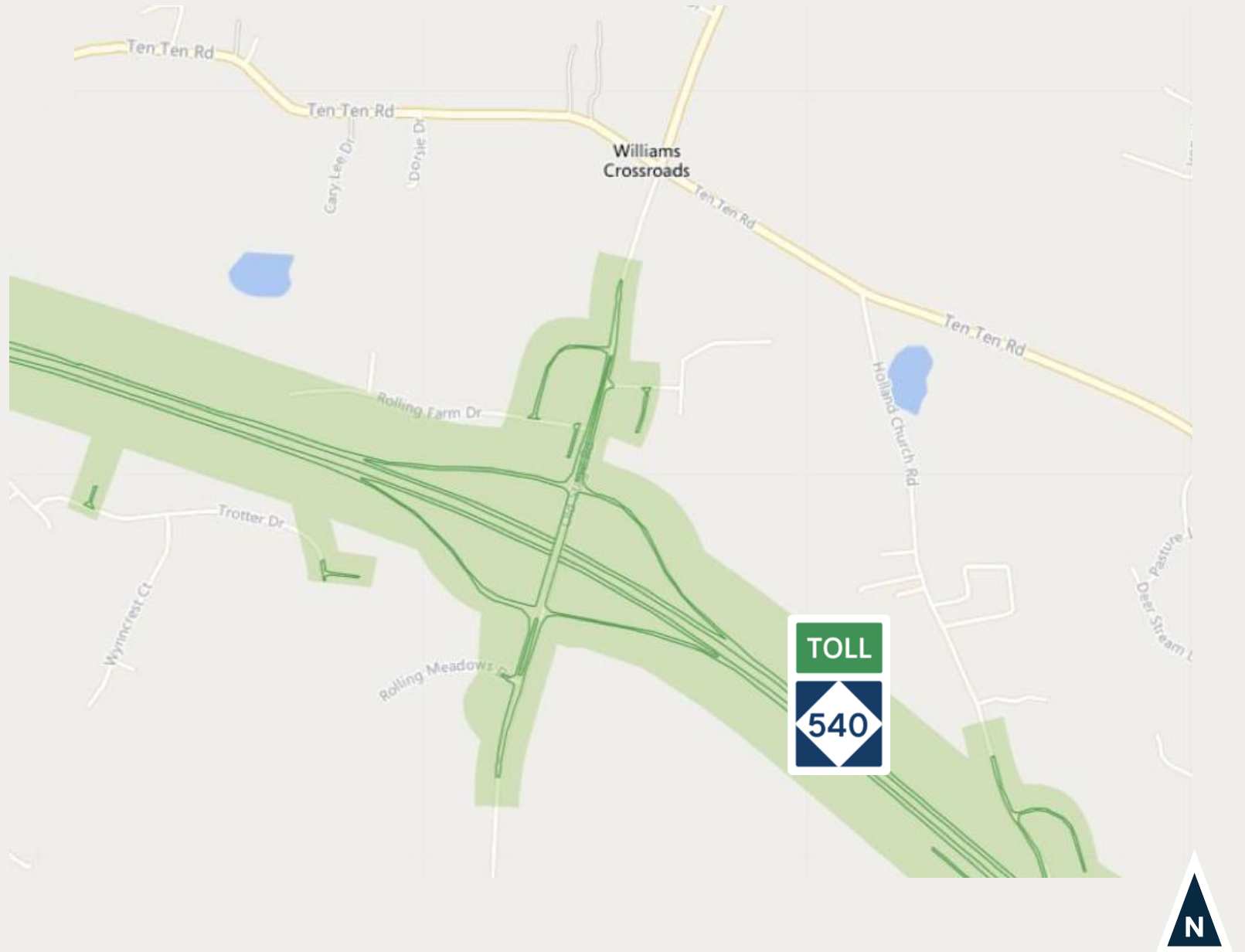




# Interchange

## Old Stage Road

C



# Old Stage Road





# Interchange

N.C. 50 / Benson Road





# N.C. 540 Mainline





# N.C. 540 Mainline

N.C. 50 / Benson Road &  
I-40 / U.S. 70 Interchanges





I-40, U.S. 70/  
I-42 and the  
future Toll  
N.C. 540





# Interchange

I-40 , U.S. 70/I-42 , the  
future Toll N.C. 540



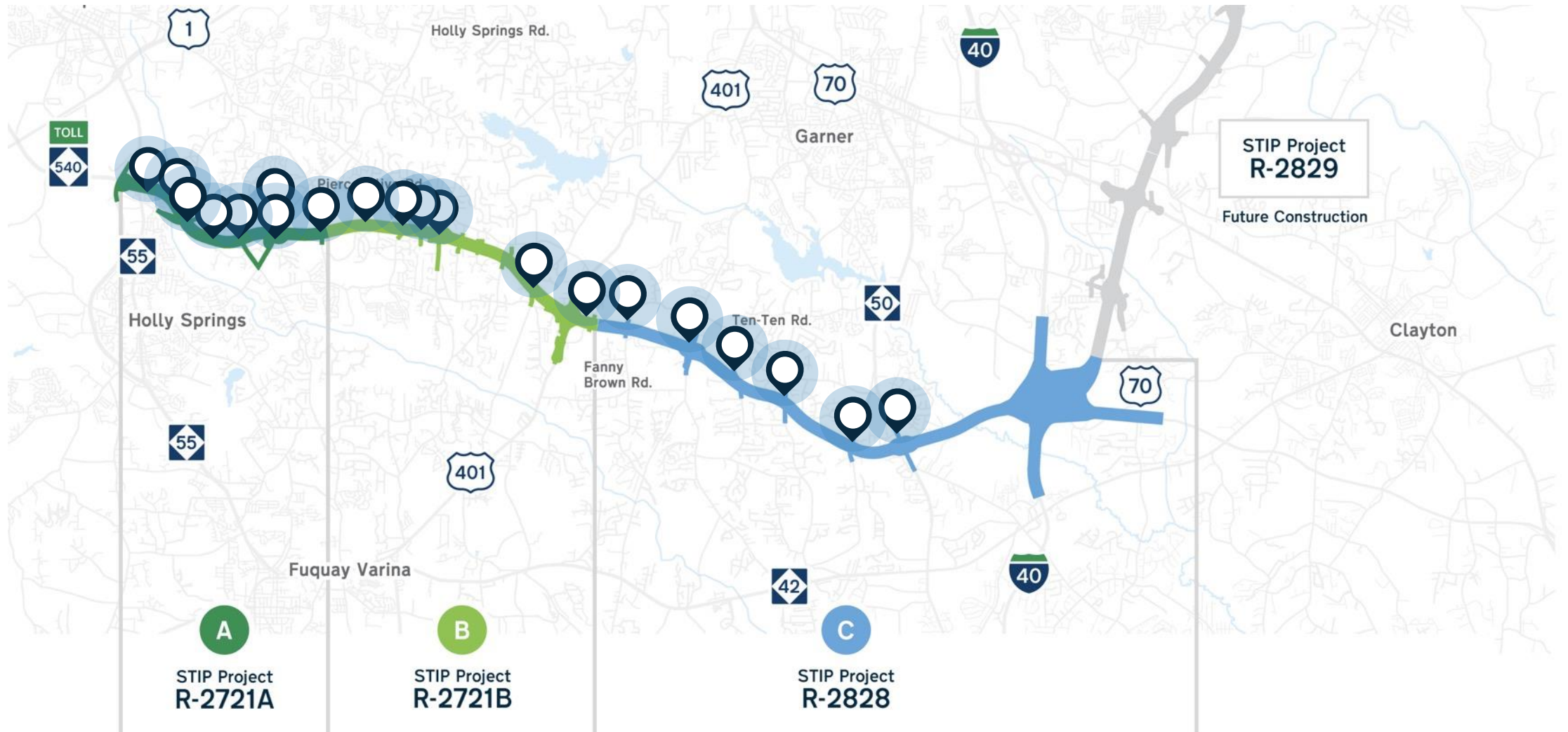


I-40, U.S. 70/I-42 and the future Toll N.C. 540





# Bike/Pedestrian/Multi-Use Accommodations



# Uniqueness



Over \$80 million in work during Phase 1 for DBEs



Relocated a beehive from a house



Worked with NC Native Plant Society to relocate plants



Unearthed artifacts from ~10,000 thousand years ago



Incorporated inlaid pavement markings





CERTIFIED  
**NATIVE PLANT  
HABITAT**



This garden conserves North  
Carolina's plant heritage and values  
our local ecosystems, while providing  
for pollinators, wildlife, and people.

**[www.ncnps.org](http://www.ncnps.org)**



# Ceramic Vessels



Archaeological  
Artifact Recovery.



# Stone Tools



Archaeological  
Artifact Recovery.

## House Relocation



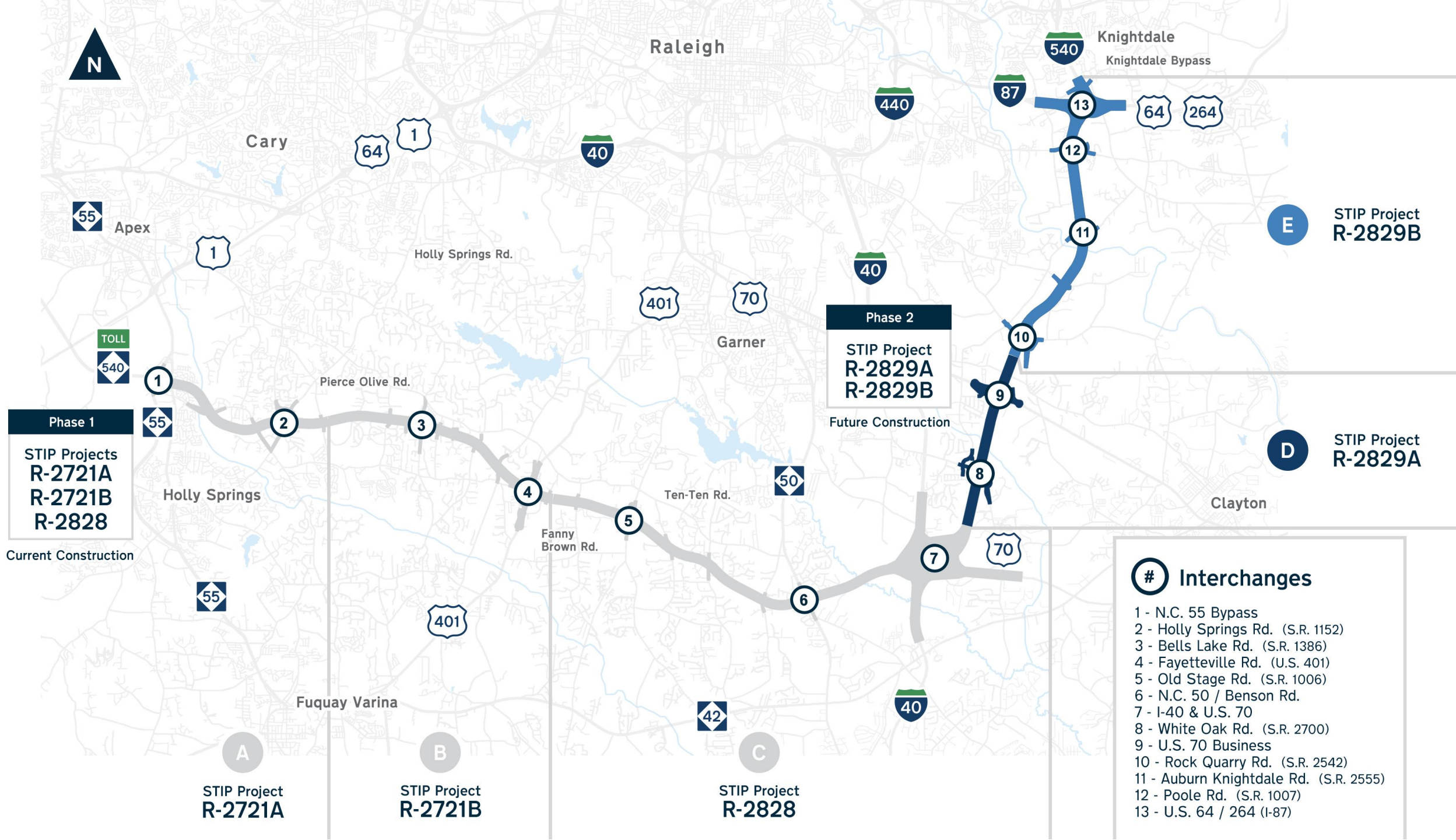




# Complete 540

## Phase 2







# Complete 540 Neighborhood Meeting



## Complete 540 Phase 2

East Garner Road Neighborhood Meeting

Triangle Expressway (Toll N.C. 540) Extension from Interstate 40 to Interstate 87

### Project Description

The Complete 540 project will extend the Triangle Expressway from the N.C. 55 Bypass in Apex to I-87/U.S. 64/U.S. 264 in Knightdale, completing the outer 540 loop around the greater Raleigh area.

The project is being completed in two phases. Phase 1, R-2721A, R-2721B and R-2828, is the western construction project between N.C. 55 Bypass and the Wake/Johnston County line. Phase 2, R-2829B, is the eastern portion of the project and I-87/U.S. 64/U.S. 264 in Knightdale and contracts were awarded in the second half of 2023.

The North Carolina Department of Transportation (NCDOT) and North Carolina Turnpike Authority (NCTA) are constructing Phase 1 of the Complete 540 project. Phase 2 construction is expected to begin in late spring 2024. In the East Garner Road area, land acquisitions are expected to begin in late summer and construction is expected to begin in late fall. Complete 540 will improve the regional network and reduce traffic congestion in the greater Raleigh area.

### Project Timeline\*

Late Spring 2024  
Complete 540 Phase 2 construction expected to begin



## Complete 540 Neighborhood Meeting

East Garner Road

### When

Tuesday, February 13, 2024  
5:30 p.m. – 7:00 p.m.

### Where

Fellowship Hall of  
Mount Moriah Baptist Church  
3000 E Garner Road  
Raleigh, NC 27610

For more information on the project:

If you have any questions, please contact us at [complete540@ncdot.gov](mailto:complete540@ncdot.gov) or 1-800-554-7849





# Community Outreach





## Complete 540 Outreach



### Public Meetings

Over 1200 participants  
over 40 public meetings



### Informing Residents

14,953 postcards &  
28 Nextdoor posts

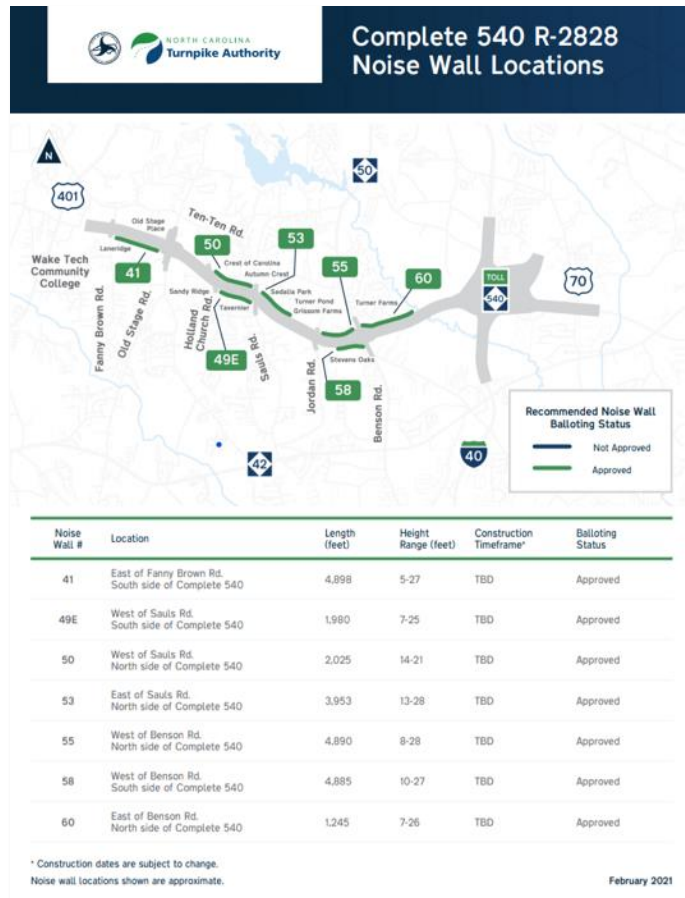


### Resident Inquiries

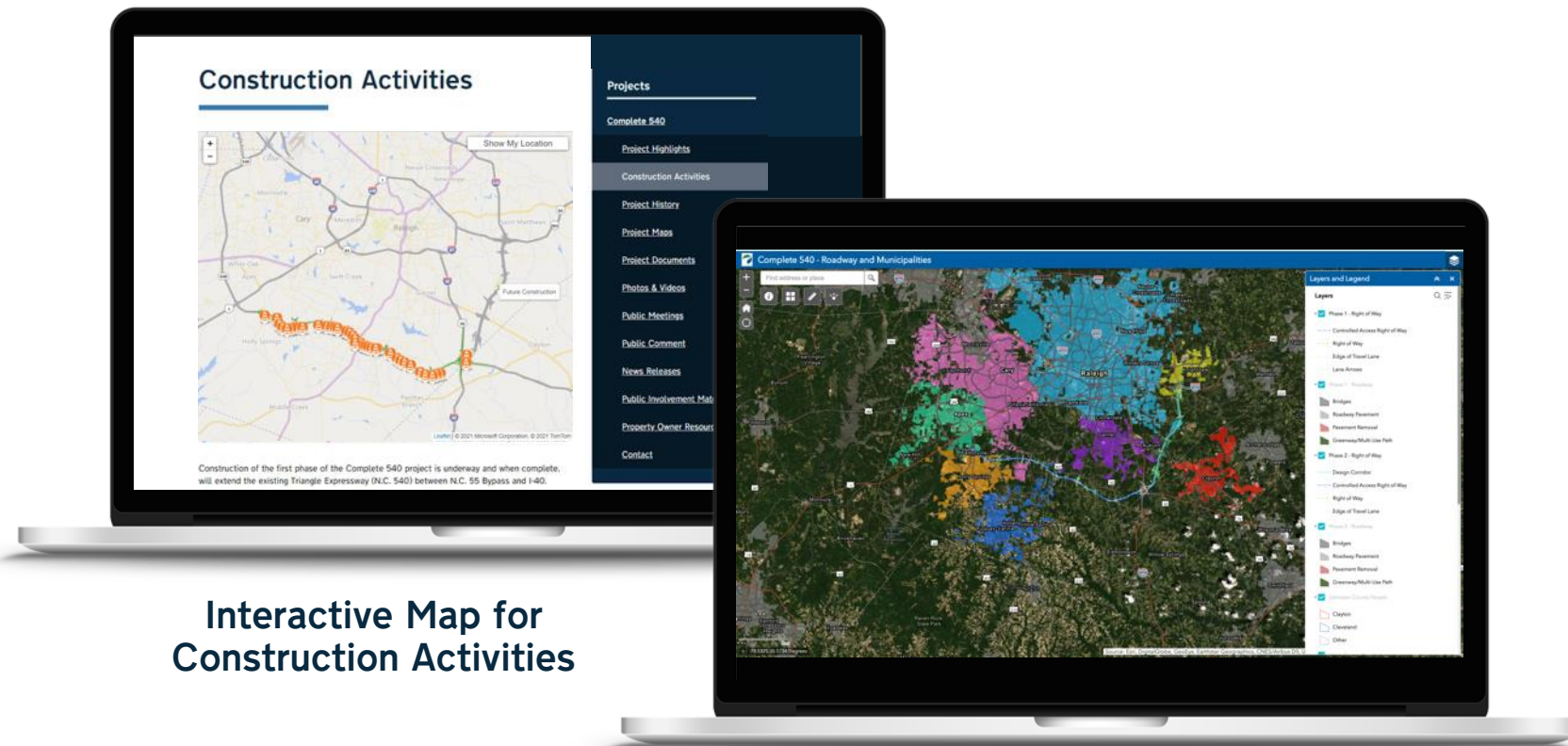
534 calls & 1026 emails to  
the Complete 540 Hotline



# Resources at [ncdot.gov/complete540](https://ncdot.gov/complete540)



Noise Wall Locations Handout



Interactive Map for Construction Activities

Preferred Alternative Interactive Map

If you have any questions, please contact us at [complete540@ncdot.gov](mailto:complete540@ncdot.gov) or 1-800-554-7849



# Contact Us



[ncdot.gov/complete540](https://ncdot.gov/complete540)



[complete540@ncdot.gov](mailto:complete540@ncdot.gov)



1-800-554-7849



@NCTurnpike

@NC\_QuickPass





Questions?



# Before You Go!

Visit our NC Quick Pass table to:

- ✓ Learn about the benefits of using a NC Quick Pass (NCQP)
- 📄 Sign up for an NC Quick Pass account to start saving 35% on tolls in NC
- 💻 Manage your existing NC Quick Pass account
- ❗ Get answers to your questions about tolling





Perfect for new homeowners to learn about roadway options in their neighborhood

# New Homeowner Welcome Packets

We've Got You Covered!

Pick up handouts at the NCQP table for your homeowner welcome packets



Information about the benefits of NCQP:

- Save 35% on tolls in NC
- Pay tolls in 19 states with a transponder
- Avoid extra fees associated with toll invoices
- Use the Flex for HOV travel in I-77 Express Lanes



QR code to our website



Welcome to the Neighborhood



NC Quick Pass is the easiest way to pay tolls in North Carolina and across the country

# Interested In Collaborating With Us?

Contact Kate Ford for partnership inquiries



Phone: (919) 817-1968



Email: [klford1@ncdot.gov](mailto:klford1@ncdot.gov)

Let's work together to enhance the new homeowner experience!



The background features a dark blue field with a subtle, repeating pattern of hexagons. Overlaid on this are several dynamic, glowing green particle trails. These trails consist of numerous small dots that form flowing, wavy lines across the upper and lower portions of the image, creating a sense of movement and energy.

**Thank you!**